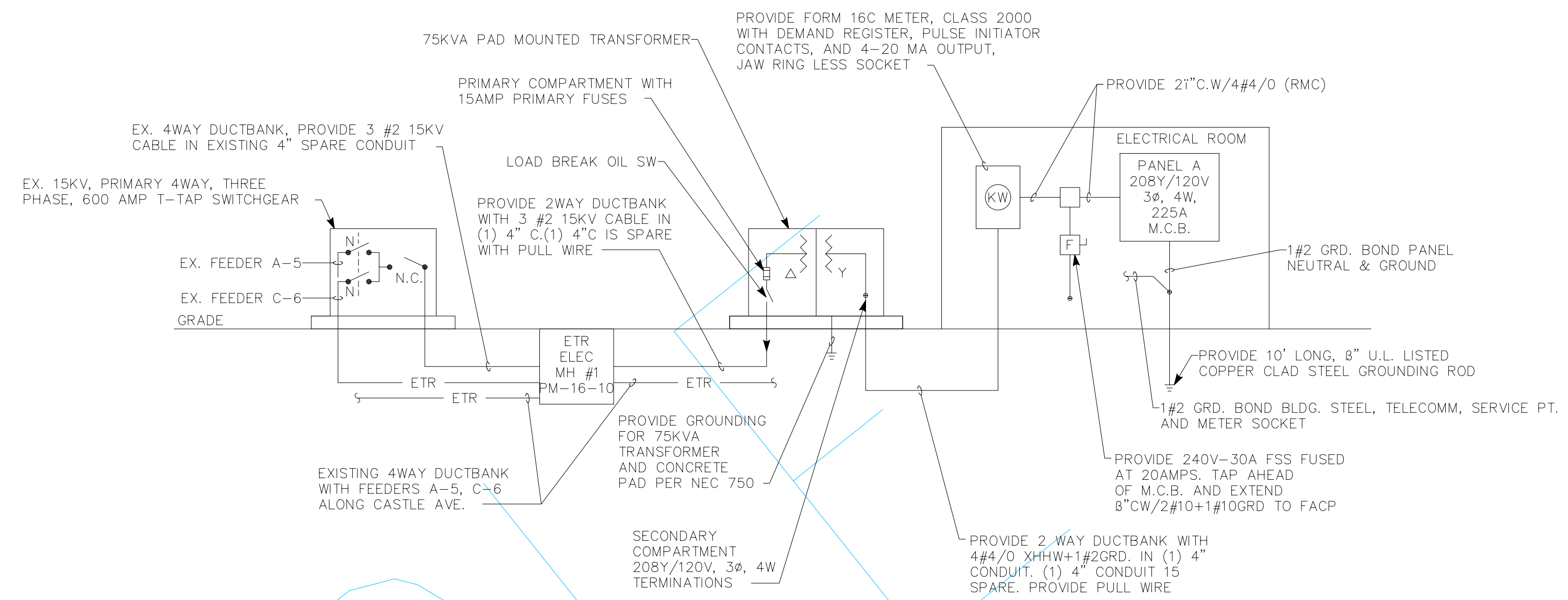


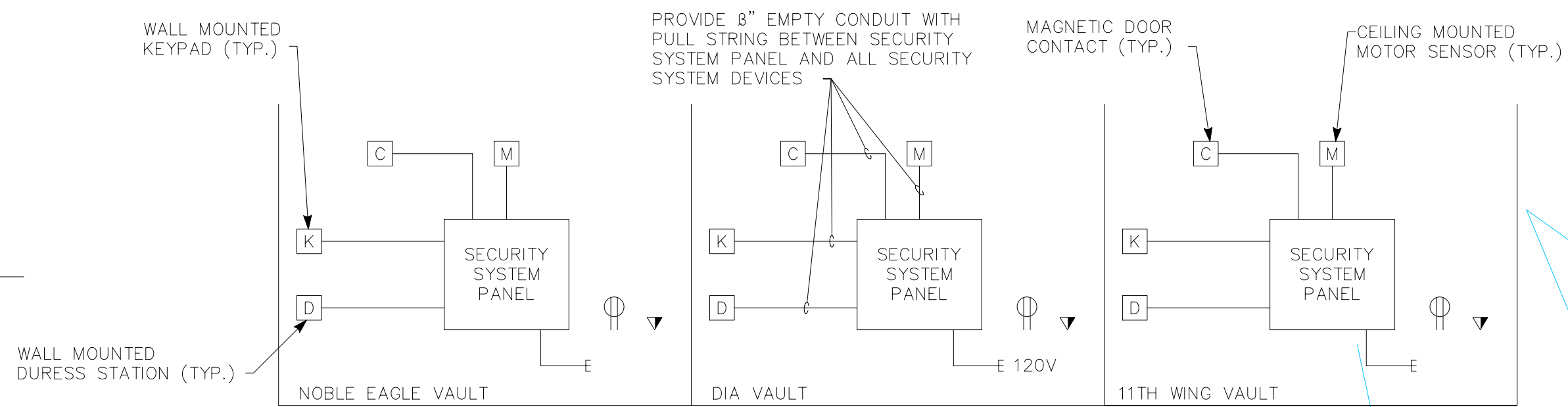
DETAIL - TYPICAL UNDERGROUND DUCTBANK INSTALLATION

NOT TO SCALE



ONE LINE POWER RISER DIAGRAM

NOT TO SCALE



ONE LINE SECURITY SYSTEM DIAGRAM

NOT TO SCALE

NOTE:

CONTRACTOR SHALL COORDINATE INSTALLATION OF DEDECIATED 120VOLT, 20AMP DUPLEX RECEPTACLE AND COMMUNICATIONS OUTLET ALONG WITH EMPTY CONDUIT WITH EXACT LOCATION OF ALL SECURITY SYSTEM'S EQUIPMENT AND CABLE BEING PROVIDED BY SECURITY SYSTEM VENDOR.

TYPE	DESCRIPTION	MANUFACTURER / CATALOG NO. OR APPROVED EQUAL	LAMPS	VOLTAGE	NOTES
A1	4" INDUSTRIAL FIXTURE, SOLID REFLECTIVE TOP, HEAVY GAUGE STEEL WITH WHITE ENAMEL	LITHONIA AF10 DAY-BRITE 1F	(3) F32T8, 4100K	120	NOTE 2
A2	4" INDUSTRIAL FIXTURE, SOLID REFLECTIVE TOP, HEAVY GAUGE STEEL WITH WHITE ENAMEL	COLUMBIA KL4-2 SERIES DAY-BRITE 1F	(2)F32T8, 4100K	120	NOTE 2
C1	HIGH PRESSURE SODIUM OUTDOOR WALLPACK, DARK BRONZE HOUSING, POLYCARBONATE LENS	LITHONIA TWH	(1) 70W HPS	120	NOTE 1
X1	SINGLE SIDED EXIT SIGN, THERMOPLASTIC HOUSING, WHITE FACE AND HOUSING, RED STENCIL, UNIT COMBO W/ TWO HEADS	EMERGI-LITE ESCORT II SERIES LITHONIA LHQM	LED (INCLUDED)	120	

NOTES:

1. MOUNTING HEIGHT: 8' ABOVE FLOOR.
2. PROVIDE WIRE GUARD AND PLASTIC LAMP SLEEVE.

PANEL: A		MAINS: MCB		AMPS: 225		AIC: 10,000			
VOLTAGE: 208Y/120V		WIRES: 4		PHASE: 3		MOUNTING: SURFACE			
CIR	DESCRIPTION	P	AMP	BRANCH CIRCUIT	CIR	DESCRIPTION	P	AMP	BRANCH CIRCUIT
1	LTG - NOBLE, DIA	1	20	8" C.W/2#12+1#12GRD.	2	RECEPTS - ELEC. ROOM ATTIC/ROOF	1	20	8" C.W/2#12+1#12GRD.
3	LTG - 11TH WING	1	20	8" C.W/2#12+1#12GRD.	4	RECEPTS - DIA	1	20	8" C.W/2#12+1#12GRD.
5	LTG - EXTERIOR	1	20	8" C.W/2#12+1#12GRD.	6	RECEPT - NOBEL EAGLE	1	20	8" C.W/2#12+1#12GRD.
7	TELE/COM BACKBOARD	1	20	8" C.W/2#12+1#12GRD.	8	RECEPTS - 11TH WING	1	20	8" C.W/2#12+1#12GRD.
9	SPARE	1	20	-	10	RECEPTS - 11TH WING	1	20	8" C.W/2#12+1#12GRD.
11	SPARE	1	20	-	12	SPACE AND BUS ONLY	1	-	-
13	SPARE	1	20	-	14	SPACE AND BUS ONLY	1	-	-
15	SPARE	1	20	-	16	SPACE AND BUS ONLY	1	-	-
17	SPARE	1	20	-	18	SPACE AND BUS ONLY	1	-	-
19	SPARE	1	20	-	20	SPACE AND BUS ONLY	1	-	-
21	SPARE	1	20	-	22	SPACE AND BUS ONLY	1	-	-
23	EF-1 - 1 HP	2	15	8" C.W/3#12+1#12GRD.	24	EF-2 - 8 HP	2	15	8" C.W/3#12+1#12GRD.
25	-	-	-	-	26	-	-	-	-
27	CUH-1 - 2.25KW	2	15	8" C.W/2#12+1#12GRD.	28	CUH-1 - 2.25KW	2	15	8" C.W/2#12+1#12GRD.
29	-	-	-	-	30	-	-	-	-
31	UH-1 - 3.3KW	2	20	8" C.W/2#12+1#12GRD.	32	UH-1 - 3.3KW	2	20	8" C.W/2#12+1#12GRD.
33	-	-	-	-	34	-	-	-	-
35	UH-1 - 3.3KW	2	20	8" C.W/2#12+1#12GRD.	36	UH-1 - 3.3KW	2	20	8" C.W/2#12+1#12GRD.
37	-	-	-	-	38	-	-	-	-
39	UH-2 - 5KW	2	35	8" C.W/2#8+1#10GRD.	40	UH-2 - 5KW	2	35	8" C.W/2#8+1#10GRD.
41	-	-	-	-	42	-	-	-	-

ONE LINE FIRE ALARM RISER DIAGRAM

NOT TO SCALE

CONSULTANTS

OWNER

RDCADD - WWW.RDCADD.COM

PHONE: 1-800-987-1876

FAX: 703-740-9160

MARK DATE DESCRIPTION

PROJECT NO:

CAD DWG FILE:

DRAWN BY:

CHK'D BY:

COPYRIGHT:

SHEET TITLE

SHEET

OF