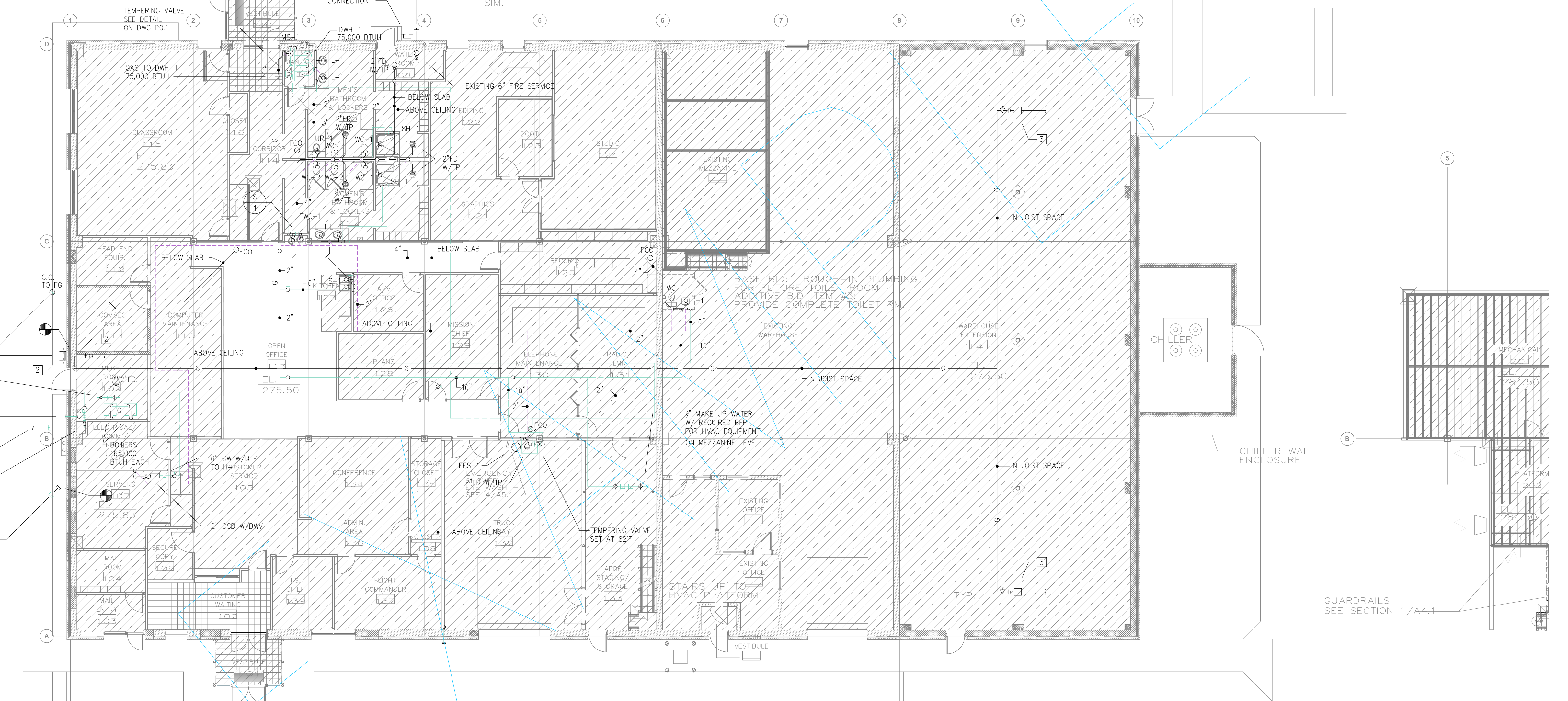
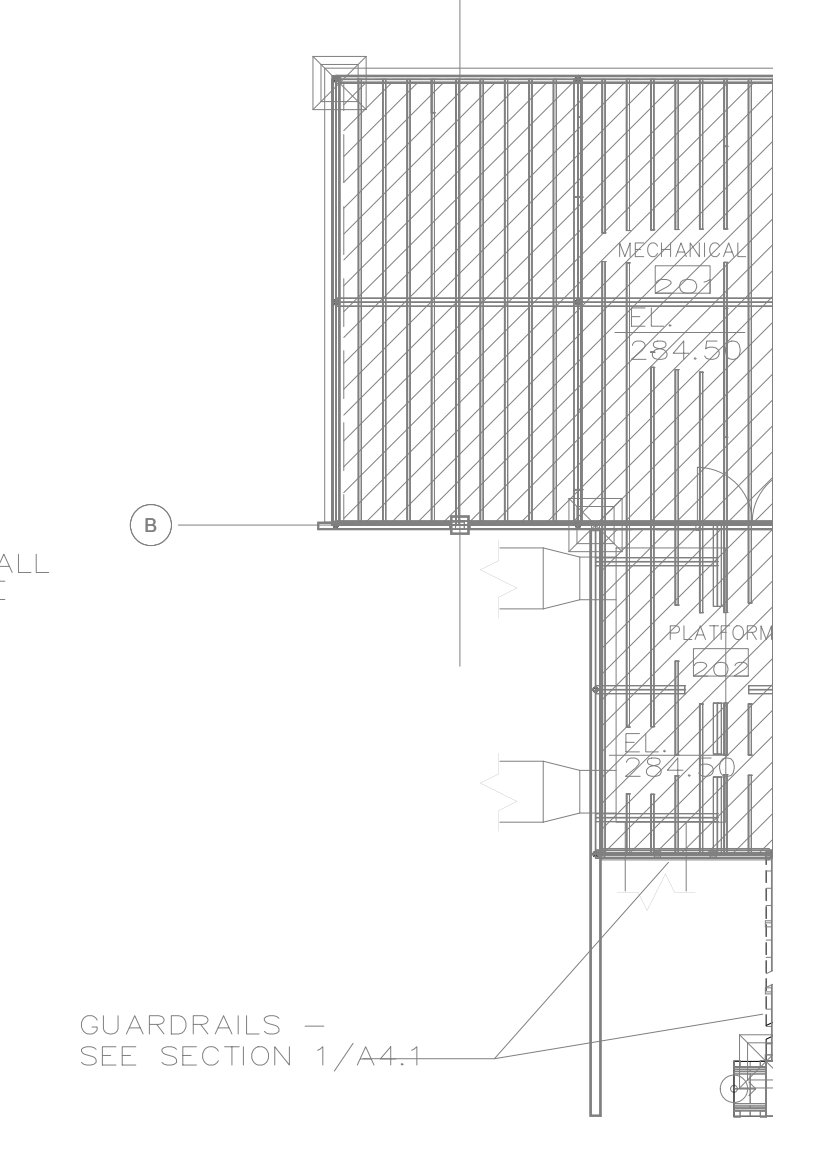


4" PIPE STEEL COLUMNS @ CORNERS ON STEEL PLATE COLUMN BASE W/ ANCHOR BOLTS, TYP. EXISTING FIRE DEPT. CONNECTION



- 1 EXISTING NATURAL GAS SERVICE AND METER
- 2 5" MAKE UP TO BOILERS W/ REQUIRED BFP
- 3 WH WITH VACUUM BREAKER
- 4 EXISTING 2" DOMESTIC WATER SERVICE
- 5 NEW BACKFLOW PREVENTER
- 6 NEW 4" SANITARY
- 7 EXISTING 8"
- 8 APPROXIMATE LOCATION OF EXISTING SANITARY AND MANHOLE
- 9 INVERT AT EXISTING MANHOLE 10'-8"



PLUMBING PLAN - NEW WORK
SCALE: 1/8" = 1'-0"

CONTRACTOR NOTE THAT SLAB IS 7" THICK.

NEW WORK NOTES - THIS DWG ONLY

- 1 CONNECT NEW SANITARY LINE TO EXISTING 4" SANITARY MANHOLE.
- 2 CONNECT NEW NATURAL GAS PIPING TO EXISTING GAS METER AT METER MANIFOLD.
- 3 NEW GAS RADIANT HEATER. SEE MECHANICAL DWGS.
- 4 CONTRACTOR TO PRESSURE CLEAN EXISTING SANITARY SEWER AND MANHOLE PRIOR TO CONNECTION OF NEW SEWER FROM BUILDING.

CONSULTANTS		
OWNER		
RDCADD - WWW.RDCADD.COM PHONE: 1-800-987-1876 FAX: 703-740-9160		
MARK	DATE	DESCRIPTION
PROJECT NO:		
CAD DWG FILE:		
DRAWN BY:		
CHK'D BY:		
COPYRIGHT:		
SHEET TITLE		
SHEET	OF	